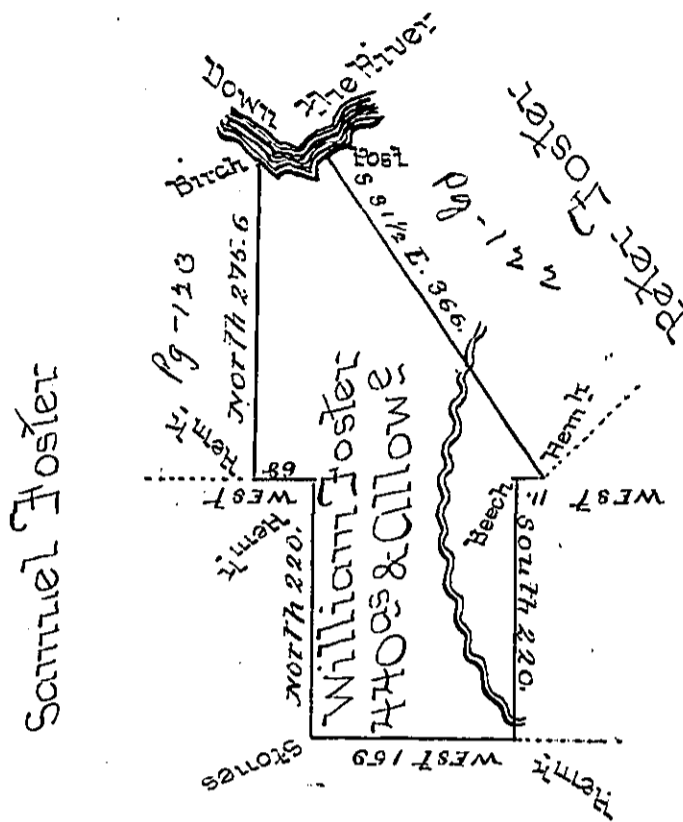


Courses and Distance  
from Birch Down to  
The Post

East—24

N 67 E—16

N 17 E—30



Chas Page

Draught of a Tract of Land situate in Bell Township Clear-  
field County containing Four Hundred and Forty Acres, and  
the usual Allowance of six per Cent for Roads &c surveyed  
the 20<sup>th</sup> Day of May 1835 in pursuance of a Warrant  
granted to William Foster Dated the 18<sup>th</sup> Day of Decem-  
ber 1793 for 400 Acres

David Ferguson D.S.

To Jacob Spangler Esq: }  
Surveyor General - }

IN TESTIMONY that the above is a copy of the original remaining on file in  
the Department of Internal Affairs of Pennsylvania, made  
conformably to an Act of Assembly approved the 16th day of  
February, 1833, I have hereunto set my Hand and caused  
the Seal of said Department to be affixed at Harrisburg,  
this 5th day of July 1898

*James W. Fatto*  
Secretary of Internal Affairs.